



Episcopal  
Relief & Development  
Working Together for Lasting Change



## 12 DAYS OF CHRISTMAS

Contributed by Jamie Martin-Currie M.S.Ed.  
Illustrated by the Rev. Jay Sidebotham

To observe the twelve days of Christmas, continue to keep your creche up until January 6 when the three kings arrive on Epiphany. To learn about the many people it takes for Episcopal Relief & Development to accomplish their work, you can add one of the twelve Ministry Partners each day during the Christmas season.

After Jesus was born the Magi, also known as the Wise Men, begin traveling from far away to visit the newborn king. This Christmas the Magi are represented by twelve Episcopal Relief & Development Ministry Partners and individuals who are very wise people!

On December 26 place the Ministry Partners in other parts of your home and move them closer each day as they make their way toward Bethlehem. There are twelve so each day a different one arrives at the manger. Now you have a total of thirty three pieces for your nativity scene.

# MINISTRY PARTNERS

PRIMARY CAREGIVERS



SECONDARY CAREGIVERS



EARLY CHILDHOOD DEVELOPMENT PROMOTERS



FAITH LEADERS



EARLY CHILDHOOD DEVELOPMENT COMMITTEE



PARTNER FIELD OFFICERS



NATIONAL LEADERSHIP



DONORS



EPISCOPAL RELIEF & DEVELOPMENT STAFF



CHURCHES



EPISCOPAL RELIEF & DEVELOPMENT VOLUNTEERS



BISHOP CURRY





# MINISTRY PARTNERS

<p>PRIMARY CAREGIVERS</p> 	<p>SECONDARY CAREGIVERS</p> 	<p>EARLY CHILDHOOD DEVELOPMENT PROMOTERS</p> 	<p>FAITH LEADERS</p> 
<p>EARLY CHILDHOOD DEVELOPMENT COMMITTEE</p> 	<p>PARTNER FIELD OFFICERS</p> 	<p>NATIONAL LEADERSHIP</p> 	<p>DONORS</p> 
<p>EPISCOPAL RELIEF &amp; DEVELOPMENT STAFF</p> 	<p>CHURCHES</p> 	<p>EPISCOPAL RELIEF &amp; DEVELOPMENT VOLUNTEERS</p> 	<p>BISHOP CURRY</p> 

Ministry Partners make the **Moments That Matter®** model possible. **Moments That Matter®** (MTM) is an Integrated Early Childhood & Parenting Empowerment program based on the World Health Organization's "Nurturing Care Framework". The aim of *MTM* is to reach vulnerable newborns to three year old's and their parents in rural Africa. The children targeted are affected by HIV, living in their rural households and influenced by other vulnerabilities of poverty and lack of access.

The program focuses on strengthening children's cognitive, language, social, emotional and motor skills development through Responsive Care & Early Learning activities for Parents; then integrates health and nutrition activities, security and safety consideration, and family livelihoods – primarily through Savings with Education (savings and loan) groups - to round out the holistic approach to seeing children reach their full development potential.

The *MTM* model is delivered through 24-months of direct engagement with those closest to the child, creating rings of support and protection rippling out. Each level of participant and stakeholder has different roles and responsibilities.



**At the center is the child, surrounded by these twelve Ministry Partners:**

**Primary Caregivers** are usually the birth mothers, often grandparents, and sometimes siblings

**Secondary Caregivers** are fathers, aunts, uncles, and cousins

**Early Childhood Development Promoters** are trained volunteers who conduct visits & caregiver group meetings to promote good health

**Early Childhood Development Committees** manage the work of the promoters

**Partner Organizations** work directly with Episcopal Relief and Development who fund them to support the management at the Diocesan level

**National Leadership & Stakeholders** are worldwide church and government entities who support the program

**Donors** offer financial support

**Episcopal Relief & Development** gives technical support and much more

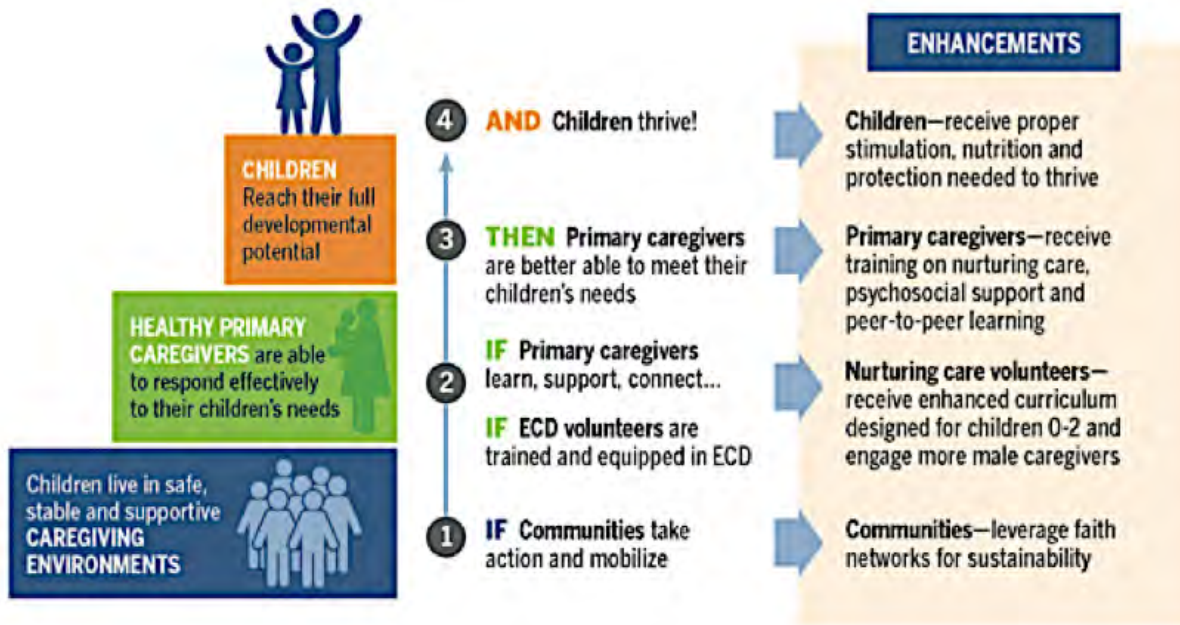
**Faith Leaders** share the campaign with congregations and pray for vulnerable children around the world

**Episcopal Relief & Development Volunteers** share their time and talent to make a difference

**Churches** launch campaigns to give parishioners the opportunity to help heal our hurting world

**The Right Reverend Bishop Michael Curry** knows if we save the children, we save the world

## Moments That Matter: Theory of Change



The MTM Theory of Change posits that creating enabling and supportive environments through mobilizing communities and faith leaders, training and equipping teams of frontline workers (which we call 'ECD Promoters' which is short for Early Childhood Development Promoters), and providing for the caregivers' own needs for support and information, that children will thrive.