



# Strategy Summary | Climate Resilience by 2030

## Global context |

The climate crisis simmers against a global backdrop of conflict, high food and energy prices, inflation, and the lingering effects of the COVID-19 pandemic. Extreme weather events, such as heatwaves, drought and floods now exceed the tolerance threshold for plants and animals. Millions of people are exposed to food and water insecurity.<sup>1</sup> In 2022, the number of people facing acute food insecurity reached nearly 350 million, more than double the number in 2019.<sup>2</sup> Those who bear the brunt of the climate crisis, yet contribute the least,<sup>3</sup> require access to capital, social inclusion and vital information to adapt to and mitigate its effects on their lives.<sup>4</sup>

**To be climate resilient** is to successfully cope with and manage impacts from a changing climate while preventing those impacts from growing worse.

## Objective of the strategy |

By 2030, Episcopal Relief & Development intends to equip 30,000 community-based climate resilience change agents and strengthen coping mechanisms of 150,000 households across 300 communities, globally. Our interventions will include evidence-based strategies that reduce disaster risk and strengthen sustainable community development for marginalized communities. Activities will emphasize timely information, financing, linkages and technology.

## Our approach to building climate resilience |

We prioritize geographies at extreme risk due to the changing climate. Through comprehensive vulnerability and risk mapping, informed by national and international climate data and projections, our programs are designed to reach communities with high food insecurity compounded by cyclical climate disasters. Communities are often rural “last mile” subsistence farming areas; isolated from the basic infrastructure and markets needed for viable agricultural livelihoods. Our faith networks are present in these communities and bridge them to government and private sector actors that are otherwise inaccessible. We deliver climate resilient solutions that have been demonstrated to be effective in providing people the flexibility and decision-making power they need to cope and adapt to the rising climate risk and uncertainty. **Our strategic interventions include: Information, Financing, Linkages, Technology**



- Climate-resilience agriculture
- Financial & business planning
- Environmental restoration
- Disaster preparedness



- Microcredit
- Cash & voucher assistance



- Faith networks
- Government
- Private sector
- Community-based organizations



- Mobile banking
- Satellite imagery
- Irrigation
- Renewal energy

<sup>1</sup> Intergovernmental Panel on Climate Change (IPCC) 6th Assessment (2022)

<sup>2</sup> United Nations (2023)

<sup>3</sup> The top 10% of emitters are responsible for 50% of all emissions, while the bottom 50% make 12% of the total. Chancel et al. World Inequality Report

<sup>4</sup> The IPCC calls for urgent climate action, focusing on both climate equity and climate justice.

# Strategy Summary | Climate Resilience by 2030

The above strategies work alongside our cross-cutting approaches:

- **Asset-Based Community Development (ABCD)**  
Our ABCD approach encourages people and communities to identify and use their existing assets (i.e., human, social, natural, economic, temporal and spiritual) together with external resources.
- **Gender Equity & Social Inclusion (GESI)**  
Our GESI approach ensures all people are embraced, and dignity is honored. Providing equal access and opportunity to women, youth, those from geographically isolated and indigenous communities, and other marginalized groups, such as persons with disabilities and the elderly is a priority.
- **Economic Empowerment**  
We promote savings, cash transfers, co-lending and other financial products to support nimble and equitable household decision-making. Savings with Education (SwE)<sup>5</sup> is our primary method to mobilize community funds, foster social inclusion and provide wraparound educational services.



These methods are mainstreamed into project design, implementation and evaluation:

DESIGN	Conduct <b>Drought Vulnerability and Risk Assessments</b> to identify priority communities and marginalized households	Engage <b>new implementing partners</b> in strategic localities for expansion or building project capacities	Revise <b>training and assessment resources</b> using most up-to-date information in climate adaptation and livelihood strengthening	Customize <b>microcredit and cash transfers</b> to project context and seasonal variability
	Map and analyze <b>key climate resilience (CR) stakeholders</b> focusing on financial institutions, mobile technology providers and services for climate migrants and displaced people	Design for integration of CR strategic interventions into <b>strong collectives</b> such as SwE farmer groups and disaster committees	Test and build appropriate <b>digital capabilities</b> into all applicable project interventions and include digital risk assessment and management plan	Incorporate <b>non-place-based interventions</b> for mobile populations such as climate migrants and displaced people
IMPLEMENTATION	Ensure <b>project length</b> is sufficient for social and financial capital building and comprehensive climate resilient livelihood strengthening	Support and assess <b>staff and community facilitators</b> to manage risks associated with microfinance and cash transfer interventions	Routinely capture, analyze and use data for <b>adaptive management</b> including short-term adjustments and long-term shifts	
EVALUATION	<b>Design evaluations</b> to capture quantitative and qualitative data ensuring consultative and awareness-building approaches with respondents	<b>Triangulate data</b> from rapid assessments, research and stakeholder consultations plus findings from humanitarian response and other focus area programs	<b>Conduct cost-benefit analyses</b> to ensure optimal investment in specific interventions	

<sup>5</sup> Savings with Education is a highly replicable savings-led, microfinance methodology that incorporates simple, relevant, high-impact training in business, finance, and health.

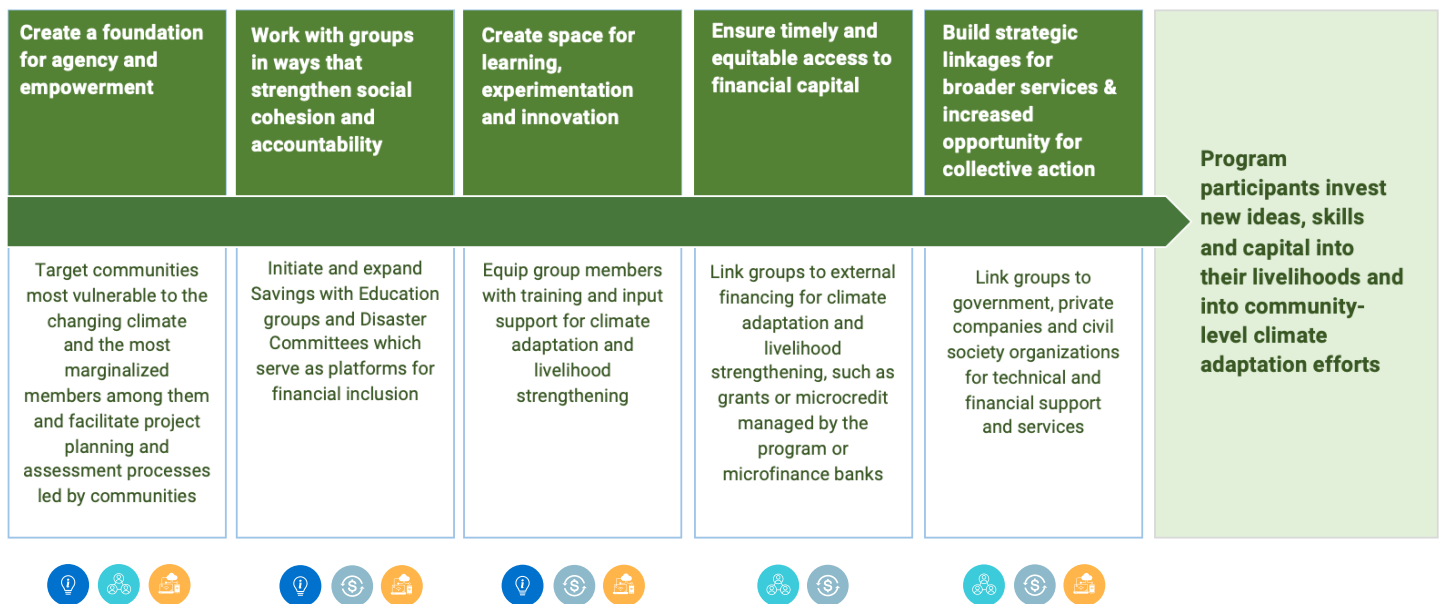
# Strategy Summary | Climate Resilience by 2030

## Ways of working |

Episcopal Relief & Development invests in change agents and institutions to foster climate resilience:

1. **Community-based facilitators:** Local change agents (e.g. Savings with Education Facilitators, Savings Group Management Committee members, Disaster committee members, Lead Farmers and government extensions agents) are trained, equipped and mentored by local partner staff. They support project participants through skill-building, mentorship and network-building.
2. **Local partner staff:** Our local implementing partner organizations are comprised of sector-specialists and development practitioners who live among the communities they serve. We invest in local technical capacity building and institutions' systems strengthening.<sup>6</sup>
3. **Faith networks and institutions:** We prioritize partnerships with faith networks and institutions that are relational, long lasting, provide reach into the "last mile," and to the most vulnerable. We support partners who walk with people holistically and honor the totality of their dignity.

All of these change agents lead a process of engagement with community members that build agency, social cohesion, innovation, financial capital and collective action:



At each step, Episcopal Relief & Development provides strategic information, financing, linkages and technology. Our goal is for program participants to apply the new ideas, skills, capital and relationships that they have gained from the program into their individual and collective livelihood activities and into community-level climate adaptation and environmental restoration efforts. This includes investment into critical livelihood infrastructure, such as sustainable energy, communal water points and grain warehouses. Restoration projects include planting trees and grasslands which provide ecosystem services which benefit the natural environment as well as livelihood strengthening for communities. Episcopal Relief & Development collects data across the project lifecycle to guide any needed course corrections or adaptations.

<sup>6</sup> See USAID's [2022 Localization Vision & Approach](#)

# Strategy Summary | Climate Resilience by 2030

## Measuring our impact | Indicators of change by 2030 |

### As a result of our Climate Resilience programs:

#### All implementing partners should demonstrate:

1. Improved education, awareness-raising and human and institutional capacity on climate change mitigation, adaptation, impact reduction and early warning
2. Increased engagement of climate migrants

#### All community groups should demonstrate (disaggregated by gender and age):

3. Increased access to capital (i.e. savings and loans, external loans and grants)
  - Proportion of groups who have increased loan rates
  - Percent increase in value of investments
4. Increased community-level asset climate adaptation (at least 1 among indicators below)
  - Water points constructed/repaired
  - Improved crop storage
  - Community gardens/nurseries
5. Increased environmental management
  - Hectares of land restored (degraded land and soil, including land affected by desertification, drought, flood)
  - Number of trees surviving after 1 and 2 years
6. Increased value-add services from public or private sector agencies
7. Implementation of local disaster risk reduction strategies

#### All participants should demonstrate (disaggregated by gender and age):

8. Improved livelihood skills (i.e., business planning, farming technique)
9. Increased income or assets
10. Diversified income or assets
11. Reduced vulnerability
12. Increased household decision-making for women

### Climate Resilience Learning Agenda Questions

- What is the minimum food, cash or voucher assistance package needed to prevent households from shedding productive assets and necessities in times of crisis (including cyclical, climate-related crises in a specific location)?
- Are our emergency responses (i.e., cash and voucher assistance, food relief, information dissemination) and climate resilience interventions (i.e., savings, microcredit, livelihood training, linkages) reaching the poorest households?
- Are our climate resilience interventions (i.e., savings, microcredit, livelihood training, linkages) equipping households to be disaster-ready (i.e., cope without going deeper into poverty)?
- How are faith networks already supporting people on the move (especially those who do not fall into a legally defined group) across the journey in long term programs, emergency response, advocacy efforts, pastoral care, etc.? What strategies would further support them?

# Strategy Summary | Climate Resilience by 2030

## Our tools for building climate resilience |

Together with our partners, we co create knowledge sharing platforms, training guides, technical briefs, assessment tools and more. The resources are then contextualized and applied.

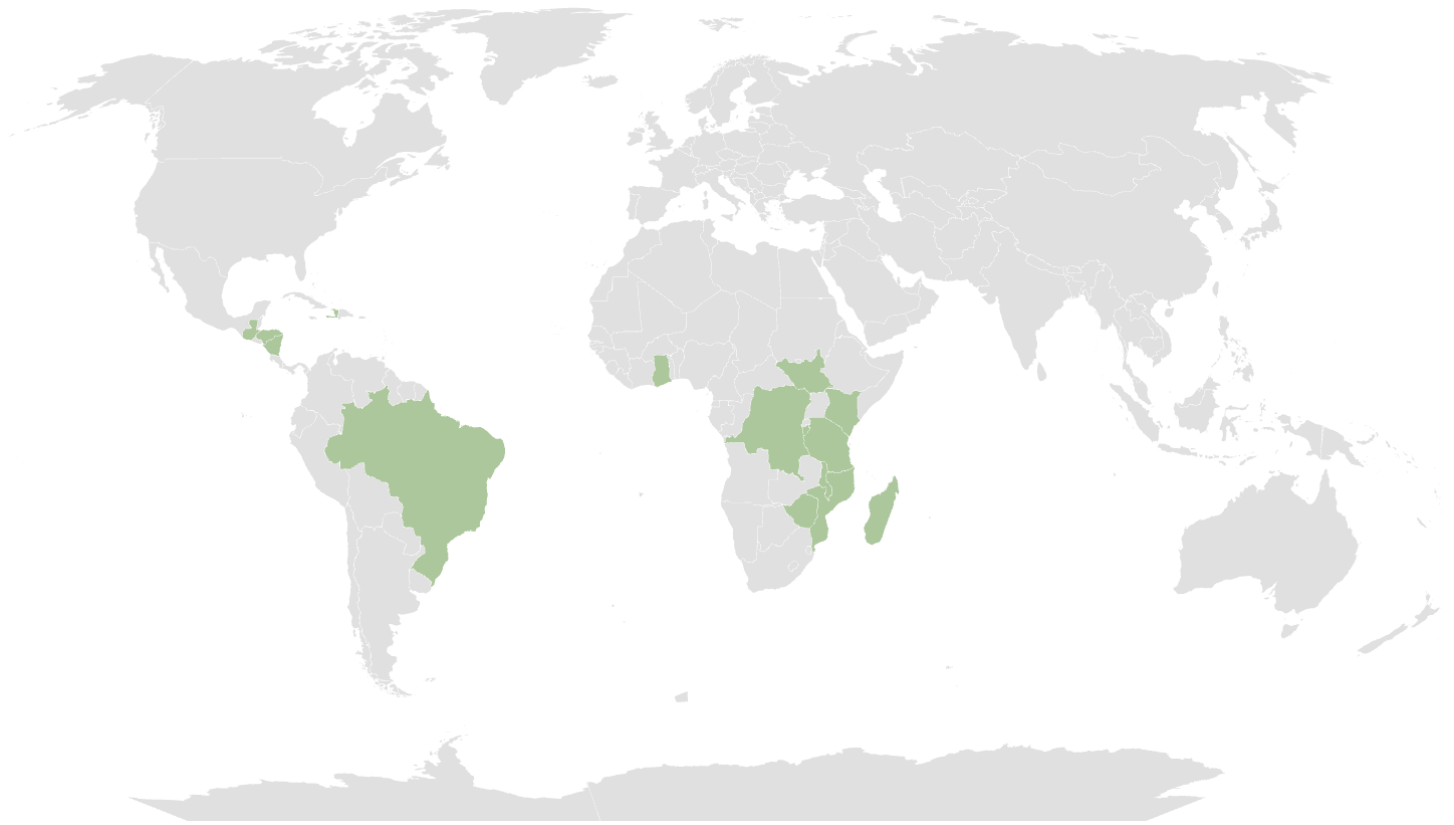
- Climate Resilience Community of Practice (CR-COP)  
This is a platform for knowledge and experience sharing, skill building and relationship building among development practitioners seeking to advance and promote their climate resilience programs. Members come from Anglican and Episcopal Church development organizations, academia and ecumenical non-profits from 12 different countries. The membership and activities of the CR-COP will evolve as our Climate Resilience Strategy is rolled out and partner model expanded.
- Climate Vulnerability & Risk (CVR) Assessments  
These are a set of tools and processes for climate hazard mapping and risk assessment, which should be understood in conjunction with non-climate related risks and impacts. These assessments are informed by climate data and projections and national agendas.
- Climate Resilience Innovation Grants  
These are small-scale, clearly time bound pilot projects that program partners can propose to test or research an innovation. Criteria for proposed innovations include: potential efficiency of impact (reach/scale); potential cost-benefit enhancement of project activities.
- Climate Resilience Participatory, Learning & Action Toolkit  
These are facilitated activities to guide consultation and engagement with groups of people to examine their own reality, challenges and aspirations and to set their own goals. Activities such as Historical Timeline, Transect Walk, Seasonal Calendar, Power Walk, Wellbeing Map and more, and are adapted for climate resilience programs.
- Climate Resilience FAMA Dialogue cards  
The FAMA (or Facts, Association, Meaning, Action) dialogue process is facilitated through a set of pictorial codes that present different practices and behaviors in context. They are used by facilitators as a social and behavior change communication approach that guides participants through a process of self-discovery, moving them from reflection to action.
- Savings with Education modules  
Savings group education sessions integrate climate adaptation and livelihood strengthening technical training into savings groups. Modules focus on improved nutrition, gender equality, climate resilient farming practices, environmental management and other topics.



# Strategy Summary | Climate Resilience by 2030

## Geographic footprint |

Our climate resilience portfolio currently spans 15 countries across Central and South America and Sub-Saharan Africa. We prioritize investment in communities that are prone to climate-related disasters, conflict and food insecurity. These emergencies tend to be protracted. Thus, we center our work at the nexus of emergency response and long-term resilience.



## Episcopal Relief & Development

*For over 80 years, Episcopal Relief & Development has worked with partners and supporters to fight poverty, hunger, disaster and disease in marginalized communities around the world. Annually, our programs impact nearly three million people. We, by design, play a facilitative role with local partners—convening and connecting them with networks and resources and providing technical assistance and other capacity strengthening supports that enhance their ability to reach and provide services to the most marginalized. Our efforts are guided by an Asset-Based Community Development Approach that affirms the gifts and resources that local institutions and people already possess, fostering long-term solutions. Moreover, our methodologies embrace community-driven strategies that are inclusive, sustainable and empowering, such that they and communities work side-by-side to address their most pressing concerns, and promote and sustain social change.*

To learn more about Episcopal Relief & Development, visit our [website](#) or contact [Emily Bloom](#), Vice President, Business Development & Innovation

# Strategy Summary | Climate Resilience by 2030

## Bibliography.

- CARE (2022). [Savings Groups in Emergencies: Learning Brief](#). 2022.
- Chancel, L., Piketty, T., Saez, E., Zucman, G. et al. (2022). [World Inequality Report 2022](#), World Inequality Lab.
- Dyer, J. et al. (2023). Pumps, prosperity and household power: Experimental evidence on irrigation pumps and smallholder farmers in Kenya. *Journal of Development Economics*, 163.
- Eckstein, D. et al. (2021). [Global Climate Risk Index 2021: Who suffers Most from Extreme Weather Events? Weather-related Loss Events in 2019 and 2000 to 2019](#). GermanWatch (2021).
- Galiani, S. et al (2022). [Trust and saving in financial institutions by the poor](#). *Journal of Development Economics*. Volume 159, November 2022.
- International Food Policy Research Institute (2023). [2023 Global Food Policy Report: Rethinking Food Crisis Responses](#). Washington, DC: International Food Policy Research Institute.
- IPCC, 2022: [Climate Change 2022: Impacts, Adaptation, and Vulnerability](#). Contribution of Working Group II to the Sixth Assessment Report of the Intergovernmental Panel on Climate Change [H.-O. Pörtner, D.C. Roberts, M. Tignor, E.S. Poloczanska, K. Mintenbeck, A. Alegría, M. Craig, S. Langsdorf, S. Löschke, V. Möller, A. Okem, B. Rama (eds.)]. Cambridge University Press. Cambridge University Press, Cambridge, UK and New York, NY, USA, 3056 pp., doi:10.1017/9781009325844.
- United Nations (2023). [World Economic Situation and Prospects 2023](#).
- USAID (2022). [Climate Strategy 2022 – 2030](#). April 2022.
- USAID (2022). [Localization at USAID: The Vision and Approach](#). August 2022.
- USAID (2022). [Migration as a Climate Adaptation Strategy: Challenges & Opportunities for USAID Programming](#). June 2022.
- World Bank (2023). [Climate Risk Country Profiles](#). Climate Change Knowledge Portal.
- World Economic Forum (2023). [The Global Risks Report 2023](#), 18th Edition, Insight Report.
- World Food Program (2023). [HungerMap Live](#).