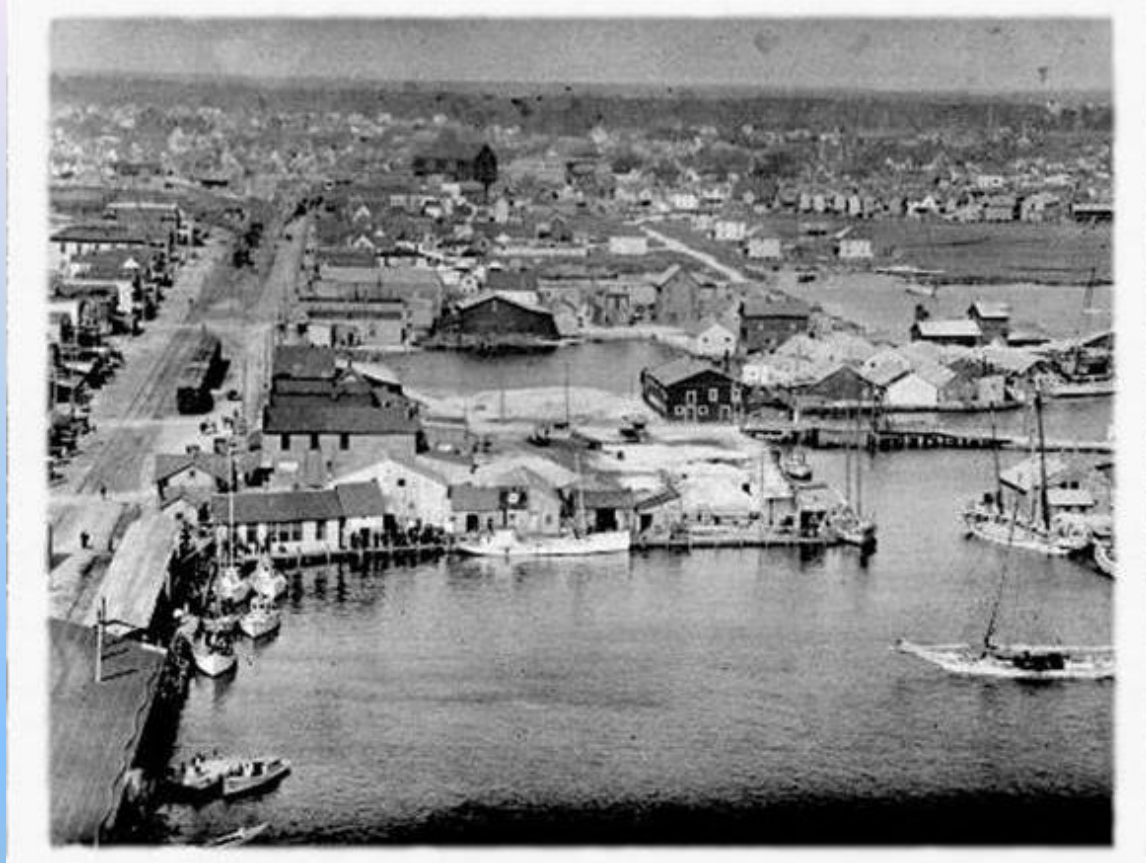


**Crisfield
Maryland**

in the
wake of
Sandy





Crisfield as it once was

First as a Mecca of the oyster industry, Crisfield, Maryland went on to establish itself as the Crab Capital of the World. It's roots as a seafood center are still evident.



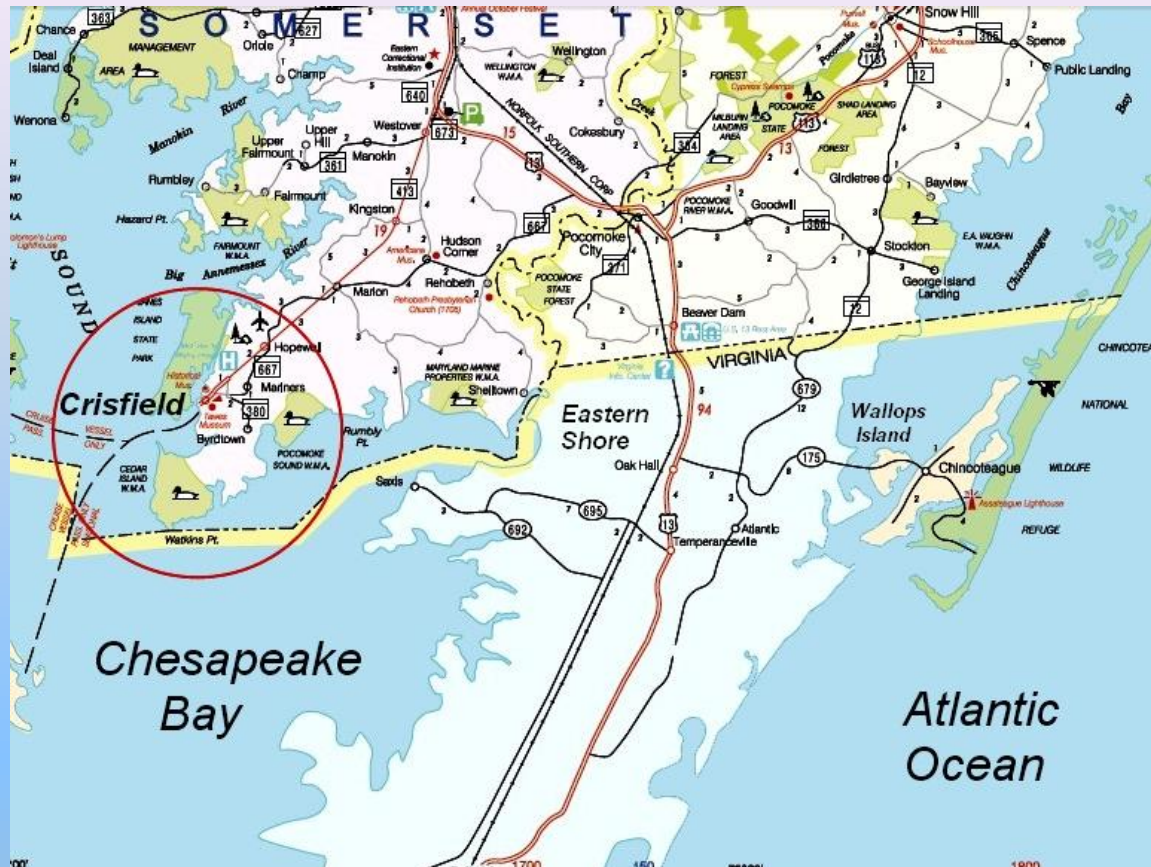
Crisfield today (before Sandy)

As the seafood industry in the Chesapeake Bay has fallen on hard times, Crisfield has offered itself as a tourist and vacation destination as well. Ferries regularly leave from here to Tangier and Smith Islands. The dock you see in the foreground was destroyed in the storm and must be replaced.



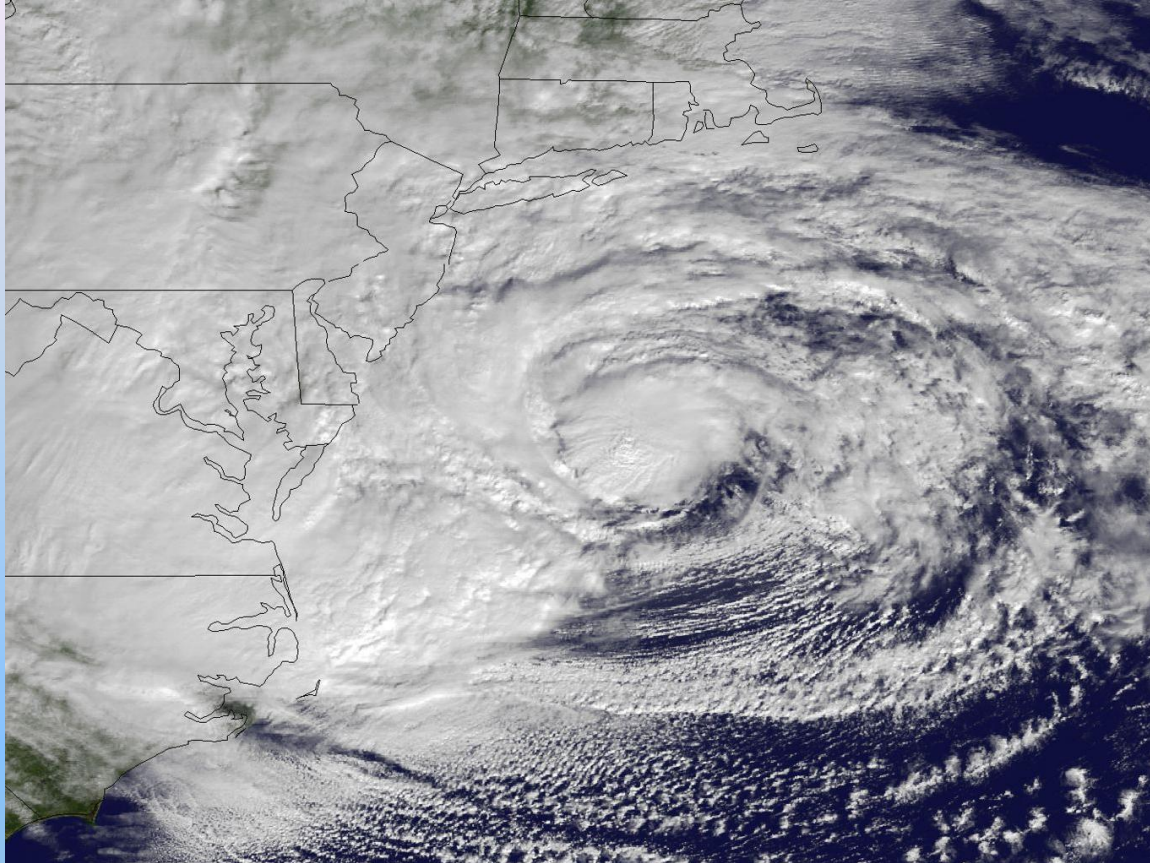
The Bay

Crisfield is located on the bayside of the Eastern Shore just north of the MD-VA border and across from Chincoteague and Wallops Islands.



Crisfield and the Bay

As you can see, Crisfield is surrounded on three sides by water. In Hurricane Sandy, on the back side of the storm, winds from the West pushed storm surge into Crisfield and held it there,.



Sandy

Crisfield may well be the southernmost town devastated by Sandy



Downtown Crisfield

Storm surge flooded the entire town except a very few high points for 3 to 4 miles inland. 1700 homes were flooded, about 600 of which are condemned to be demolished entirely.



The water

The storm surge was pushed inland for 18 hours with wave action adding to the damage done to foundations.



Aftermath

When the waters left, as we have seen elsewhere, the real damage is only hinted at by the flood lines.



Joe Pinto

Although Crisfield has no Episcopal Church, Episcopalian Joe Pinto sits on the board of the city's Long Term Recovery Committee. In Hurricane Sandy, he lost his car, washer /dryer and heating unit but living quarters were unharmed. He is the Episcopal Volunteer Coordinator as well.



James Island State Park

This is part of an Episcopal Team from Indianapolis, Indiana, that was working on repairs in James Island State Park in Crisfield. The team had teenaged members who are not allowed on housing worksites (under 18).



Home Rebuild

This house could not be saved and was demolished for a new one. As will be the case in much of Crisfield, a new foundation is being built to above the flood line.



The New Foundation

For this project, the Mennonites are providing the construction personnel while the Episcopalians and Lutherans provide funding.



Partnership

Rebuilding and reconstruction of homes in Crisfield are accomplished by partnerships of faith-based outreach organizations. The specific contributions for each project are agreed upon when construction is approved.



The Red House

This house is an all-Episcopalian project. Volunteer labor is being provided by St. Paul's Episcopal Church in Marion, Maryland. The materials removed by gutting the interior are hidden behind the tree on the left.



Long Term Recovery Office

The Long Term Recovery Committee is also a partnership of faith-based outreach organizations, pooling their resources for administrative needs.



Office

The office is manned by three full-time staffers plus volunteers to manage recovery cases from application to vetting the applicants to deciding what construction is needed and agreeing on funding.



Long Term Recovery Participants

**Methodists
Mennonites
Lutherans
Episcopalians
Baptists
World Renew
...and others**

(of the Christian Reformed
Church of North America)

**Funds authorized by FEMA are held up by
conflicts between Federal and State rules**



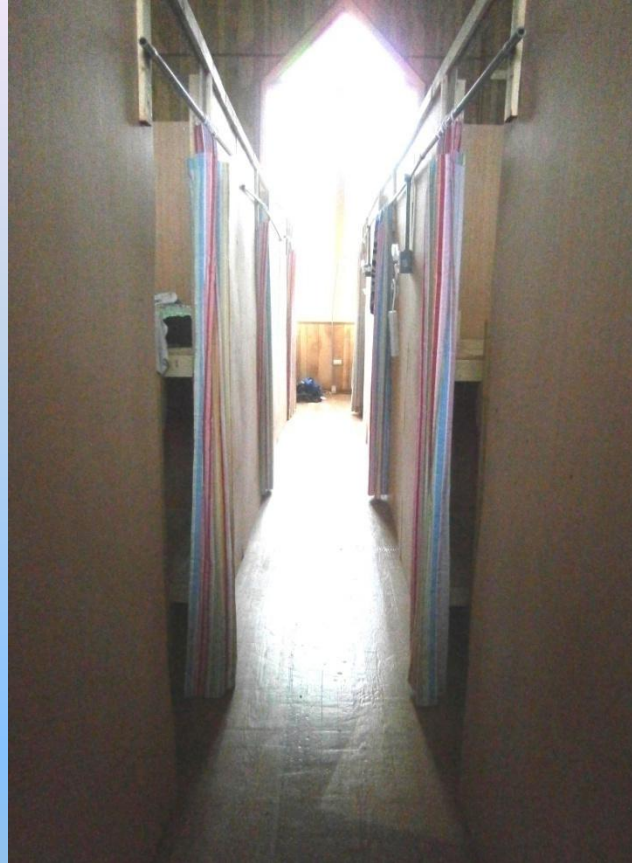
Old Church

Deconsecrated church converted into volunteer housing



Showers

The shower trailer was provided by the Baptists. The unit includes clothes washer and dryer.



Hallway

The living quarters were constructed by the Methodists to be portable and can be disassembled easily for storage or relocation



Bunks

The double bunks are assembled in 4-person cubicles with draw drapes. You must bring your own air-mattress.



Restrooms

Separate indoor restrooms.



Dining Hall

The dining hall on the first floor includes a full kitchen and equipment.



Tool truck

Methodist's tool truck is primarily for projects where they take the lead.



The Old Radar Station

Abandoned radar station owned by the American Legion has been converted into volunteer living quarters. The accommodations are comparable to the old church except the showers are indoors. This facility was converted and is managed by the Mennonites.

Volunteer Accommodations

The Old Church

Capacity 30 to 48

No charge but donations accepted

The Old Radar Station

Capacity about 40

Daily charge of \$25 includes 3 meals

**Additional housing may be available.
Ask ahead.**



The McCready Foundation Center

The McCready Foundation maintains a hospital, an outpatient center, a nursing home and an assisted living facility.



The Real Tragedy

Much of Crisfield looks to be unharmed from the outside. And even inside, you may not see irreparable harm to foundations or that a house must be razed. This is the home of the Ward brothers, famous for wooden duck decoys. It is to be demolished.



Old Radar Station Renamed “Kamp Kairos”

Definition of “*KAIROS*”:

**a time when conditions are right for the accomplishment of
a crucial action : the opportune and decisive moment**

There is so much work to do !



Episcopal
Relief & Development